

# SETUP GUIDE

## Notes, Notices, and Cautions

Throughout this guide, blocks of text may be accompanied by an icon and printed in bold type or in italic type. These blocks are notes, notices, and cautions, and they are used as follows:



*NOTE: A NOTE indicates important information that helps you make better use of your computer system.*

**NOTICE: A NOTICE indicates either potential damage to hardware or loss of data and tells you how to avoid the problem.**



**CAUTION: A CAUTION indicates a potentially hazardous situation which, if not avoided, may result in minor or moderate injury.**

---

**Information in this document is subject to change without notice.  
© 1999–2000 Dell Computer Corporation. All rights reserved.**

Reproduction in any manner whatsoever without the written permission of Dell Computer Corporation is strictly forbidden.

Trademarks used in this text: *Dell*, the *DELL* logo, *BE DIRECT*, and *Inspiron* are trademarks of Dell Computer Corporation; *Microsoft*, *Windows*, and *Windows NT* are registered trademarks of Microsoft Corporation.

Other trademarks and trade names may be used in this document to refer to either the entities claiming the marks and names or their products. Dell Computer Corporation disclaims any proprietary interest in trademarks and trade names other than its own.



# Contents

<b>Chapter 1</b>	<b>Introduction . . . . .</b>	<b>1-1</b>
	Information Resources . . . . .	1-1
	Tutorials . . . . .	1-1
	System Help . . . . .	1-1
	Reference and Troubleshooting Guide . . . . .	1-2
<b>Chapter 2</b>	<b>Operating System Setup . . . . .</b>	<b>2-1</b>
	Microsoft Windows 98 Second Edition . . . . .	2-1
	Microsoft Windows NT . . . . .	2-3
	Microsoft Windows 2000 Professional . . . . .	2-4
<b>Chapter 3</b>	<b>Using Hardware Devices . . . . .</b>	<b>3-1</b>
	Adding a Printer . . . . .	3-1
	Preparing a Printer . . . . .	3-1
	Connecting a Parallel Printer . . . . .	3-1
	Connecting a USB Printer . . . . .	3-2
	Installing Software for a Printer . . . . .	3-3
	Touch Pad . . . . .	3-4
	PC Cards . . . . .	3-5
	Installing PC Cards . . . . .	3-5
	Removing PC Cards . . . . .	3-5
	CD-ROM and DVD-ROM Drives . . . . .	3-6
<b>Figures</b>	Figure 3-1. Parallel Printer Connections . . . . .	3-2
	Figure 3-2. USB Printer Connections . . . . .	3-3
	Figure 3-3. Touch Pad and Buttons . . . . .	3-4
	Figure 3-4. Inserting a Disc Into the Drive . . . . .	3-6





# CHAPTER 1

## Introduction

This *Setup Guide* provides instructions for setting up a Dell™ Inspiron™ portable computer. Both first-time and experienced computer users should complete the instructions in Chapter 2, “Operating System Setup,” to properly configure the computer for operation. Chapter 3, “Using Hardware Devices,” describes procedures for using your computer’s hardware.

### Information Resources

In addition to this guide, Dell provides other handy reference tools to help you make the most of your computing experience.

#### Tutorials



If you have an **i-Learn My Dell PC** icon on your Microsoft® Windows® desktop, double-click the icon to access easy-to-use, animated tutorials that introduce you to your computer and the Microsoft products installed on it.

#### System Help

The system *Help* allows you to search for information in multiple ways. You can quickly access information on the following topics:

- Hardware and software features of your system
- Options and upgrades
- The Microsoft Windows desktop, changing your wallpaper and screen saver, creating shortcuts, and positioning icons
- Software access, installation, and removal
- Basic file management, such as finding, copying, deleting, and renaming files
- Tips on using your computer hardware devices
- Answers to commonly asked questions about your computer
- Phone numbers for contacting Dell for help



To open the *Help*, click the **Start** button, point to **Programs—> Dell Documents**, and click **Dell Inspiron System Help**.



You may also double-click the **Dell Documentation** icon on the Windows desktop, click **System Information**, and then click **Dell Inspiron System Help**.

## ***Reference and Troubleshooting Guide***

Your *Reference and Troubleshooting Guide* provides information on adding upgrades like memory, performing basic troubleshooting procedures, and reinstalling drivers. It also covers technical specifications, the system setup program, and system codes and messages.



## CHAPTER 2

# Operating System Setup

Your Dell computer has been shipped with the Microsoft Windows 98 Second Edition, Microsoft Windows NT® Workstation, or Microsoft Windows 2000 Professional operating system already installed. Perform the steps in the following section that corresponds to your operating system so that the software functions properly on your Dell computer.

**NOTICE: Before using this document, connect your computer according to the steps on the *Getting Started* sheet. Failure to properly connect your computer may result in computer malfunctions or damage.**

### Microsoft Windows 98 Second Edition

Initial setup of Windows 98 Second Edition takes about 15 minutes. The setup process is customized according to which computer components you have.

**NOTICE: To prevent possible conflicts with Windows 98 Second Edition, do not connect devices such as printers or install items such as PC Cards before you complete your Windows 98 Second Edition setup. Connect or install these devices only after you complete the operating system setup.**

**NOTICE: Do not interrupt the Windows 98 Second Edition setup process. Doing so may render your computer unusable. (Clicking the Skip buttons during the setup process is not an interruption of the process.)**

**NOTICE: If you experience problems and the computer stops responding, do not use <Ctrl><Alt><Del> to reboot your computer. Instead, press and hold the power button for approximately 5 seconds to shut down the computer. Then press the power button again to turn on the computer. When prompted, select Safe Recovery Mode to continue the setup.**

To complete the initial setup of Windows 98 Second Edition on your Dell computer, perform the following steps:

1. If you have an internal modem installed in your computer, connect a telephone line to it as instructed in the *Getting Started* sheet that accompanied your computer.

**NOTICE: If you have a PCMCIA modem, remove it before you turn on your computer.**

2. Turn on your computer as instructed in the *Getting Started* sheet that accompanied your computer.

The **Dell Software License** window appears.

3. Read the software license agreement that came with your computer and then press any key to continue.
4. When your Express Service Code displays, press any key to continue.



*NOTE: Dell's Express Service Code may not be available in all countries.*

The computer restarts automatically.



*NOTE: After the computer restarts, the **Windows 98** screen appears for about 1 or 2 minutes. Although it may appear as if no activity is occurring, the operating system is actually loading program files.*

5. When the **Getting Started** window appears, verify that the regional and keyboard setup and layout settings are correct for your location; then click **Next**. Otherwise, click the appropriate settings and then click **Next**.
6. When prompted, enter your name and company information and then click **Next**.

If your computer includes a modem, proceed to step 7. Otherwise, proceed to step 9.

7. A modem preparation window appears that allows you to connect to Microsoft and register your operating system. Click **Skip** and proceed to step 10, or enter the requested information, click **Next**, and proceed to step 8.

A registration progress window appears while your modem connects to Microsoft.

8. To send the registration information to Microsoft, enter the requested information in the **Registration Confirmation** window and click **Next**. If you do not want the information sent, uncheck the **Please send the information on this screen to Microsoft** box and click **Next**.
9. Read the license agreement, click **I accept the Agreement**, and then click **Next**.

If you do not accept the agreement, you cannot access Windows 98 Second Edition.

10. Set up your Internet connection.

If you ordered the Dellnet Internet service, click **Next** and go to step 11.

If a screen appears that prompts you to set up your Internet access or provides information about how to connect to the Internet, follow the instructions that appear on the screen or click **Skip** to bypass Internet setup and information.

If no prompt appears, go to step 11.



11. If an animated tutorial starts, watch the tutorial for an introduction to your computer and the Microsoft products installed on it. Then click **Next**.

If a tutorial does not start, go to step 12.

12. Click **Finish**.

13. If the **Date/Time Properties** window shows the correct time and date for your area, click **Close**. Otherwise, enter the correct time and date, click **Apply**, and then click **OK**.

Windows 98 Second Edition is now set up and the Windows desktop appears on the screen.

Windows 98 Second Edition is now completely installed on your computer. See "Adding a Printer" in Chapter 3 for instructions on how to connect a printer. See "Information Resources" in Chapter 1 for descriptions of reference tools that are included with your Dell computer.

## Microsoft Windows NT

The initial setup of the Windows NT Workstation 4.0 operating system takes approximately 15 minutes to complete. Additional setup time may be required, depending on your computer's internal and external devices.

To complete the initial setup of Windows NT Workstation 4.0 on your computer, perform the following steps:

1. Turn on your computer.
2. At the **Dell Software License Agreement** window, follow the directions on the display to continue.
3. At the **Technical Support Information** window, follow the directions on the display to continue.

The **Technical Support Information** window displays the service tag sequence and Express Service Code for your computer. Click **Next**.

*NOTE: Dell's Express Service Code may not be available in all countries.*

The **Select Operating System** menu appears. Then the **Windows NT Setup** window appears.

4. At the **Microsoft Software License Agreement** window, click **I accept this agreement** and then click **Next** to continue.
5. At the **Windows NT Setup** window, click **Next>**.
6. At the **Name and Organization** window, type your name and organization and click **Next>**.

Your name and organization can each be up to 50 characters long.





7. In the **Registration** window, type your product ID number and click **Next>**.

*NOTE: The Product ID number is the bar code number found on the Microsoft sticker, which is located either on the front cover of the Microsoft Windows NT Workstation—Start Here booklet or on the bottom of your computer.*

8. When prompted, type the computer name and click **Next>**.

The computer name is the name used to identify your computer on a network and, therefore, must be unique to the network. It can be up to 15 characters long.

The **Administrator Account** window appears.

9. If you want to use an administrator password, type the password in the **Password** field and again in the **Confirm Password** field, and then click **Next>**.

The password can be up to 14 characters long. If you do not want to use a password, leave the **Password** field blank.

**NOTICE: Type the password carefully. It is case-sensitive, and if you lose or forget it, you must reinstall the operating system to access Windows NT.**

10. When the **Windows NT Setup** window appears, click **Finish>** to restart the computer.
11. When prompted, press <Enter> to select the default operating system.



*NOTE: The default is selected automatically after 30 seconds if no selection is made. Do **not** select anything other than the default operating system.*

12. At the **Begin Logon** window, press <Ctrl><Alt><Del>.
13. When prompted, type the password you chose in step 9 and click **OK**.

## Microsoft Windows 2000 Professional

The initial setup of the Windows 2000 operating system takes approximately 7 minutes to complete. Additional setup time may be required, depending on your system's internal and external devices.



**CAUTION: Do not dock the computer before turning it on for the first time. Doing so may cause configuration problems during the operating system setup.**

To complete the initial setup of Windows 2000 Professional on your computer, perform the following steps:

1. Remove any PC Cards installed in the PC Card slot of the computer before turning it on.



*NOTE: PC Cards that are left in the computer during setup may cause installation difficulties. You may reinstall PC Cards after you have completed the operating system setup and restarted the computer.*

2. Turn on your computer.

The **Software Licenses** screen appears. It is important that you read and understand the license agreements. You must accept the agreements to proceed with the setup of your system.

3. Press any key if you accept the Dell-installed software license agreements.

The **Important Technical Support Information** screen appears.

4. Press any key to continue.

Your system restarts and the **Windows 2000 Professional Setup License Agreement** window appears.

5. Click **I accept this agreement**. Click **Next**.

The **Personalize Your Software** window appears.

Type your name and the name of your organization. You must type in a name, but the organization field is optional.

6. Click **Next**.

The **Computer Name and Administrator Password** window appears. A suggested name for your computer appears in the name box that you can change or accept. Leaving the password field empty is acceptable if you prefer not to use a password. Although the administrator password is optional, it is useful for protecting against unauthorized access to operating system settings. You may add a password of up to 14 characters in length. You may add or change a password later.

**NOTICE: Type the password carefully. It is case-sensitive, and if you lose or forget it, you must reinstall the operating system to access Windows 2000 Professional.**

More information on administrator and user logins is available from the Windows 2000 Help feature.

7. Click **Next**.

The **Date and Time Settings** window appears.

8. Verify that the settings are correct for your time and time zone and click **Next**.

The **Networking Settings** window appears. You may choose whether to use typical or custom settings. See your network administrator if you need to add custom settings at this point.

9. Click **Next** to accept the default **typical** settings.

The **Workgroup or Computer Domain** window appears. You may add a workgroup name, but it is not required. Check with your network administrator if you need to add a computer domain.

10. Click **Next** to continue.

The **Performing Final Tasks** window appears. Then the following message appears:

You have successfully completed Windows 2000 Setup. If there is a CD in your drive, remove it. Then, to restart your computer, click Finish.

11. Click **Finish** and your system restarts.

The **Welcome to the Network Identification Wizard** window appears.

12. Click **Next**.

The **Users of This Computer** window appears.

You can change settings as indicated on the screen or enter a user password for the name entered earlier in the setup. If you prefer to configure users later, you can accept the defaults on the screen and proceed.

13. Click **Next**.

The **Completing the Network Identification Wizard** window appears.

More information on the Network Identification Wizard and on administrator and user logins is available from the Windows 2000 Help feature

14. Click **Finish**.

The **Getting Started with Windows 2000** window appears. You can click any of the items, or you can exit from this window and begin working on the desktop.



## CHAPTER 3

# Using Hardware Devices

This chapter provides information and tips on using your computer hardware devices (physical parts of a computer). It also includes general instructions for using a port replicator. For more information on using hardware, see the system *Help*. See “System Help” in Chapter 1 for instructions on accessing the system *Help*.

Many of the computer devices you might want to use or connect come with their own instructions and/or software. Follow the device manufacturer’s instructions when connecting and using these devices.



**CAUTION: For your personal safety and protection of your computer, always turn off your computer and disconnect it from the electrical outlet before attaching any devices.**

## Adding a Printer

This section provides instructions on how to prepare and add a parallel printer or a Universal Serial Bus (USB) printer to the computer.

### Preparing a Printer

See the documentation that came with the printer for any preparation procedures that are recommended by its manufacturer. You may be instructed to perform the following tasks:

- Remove the manufacturer’s shipping packaging
- Install the toner or ink cartridge(s)
- Align the toner or ink cartridge(s)
- Load printer paper

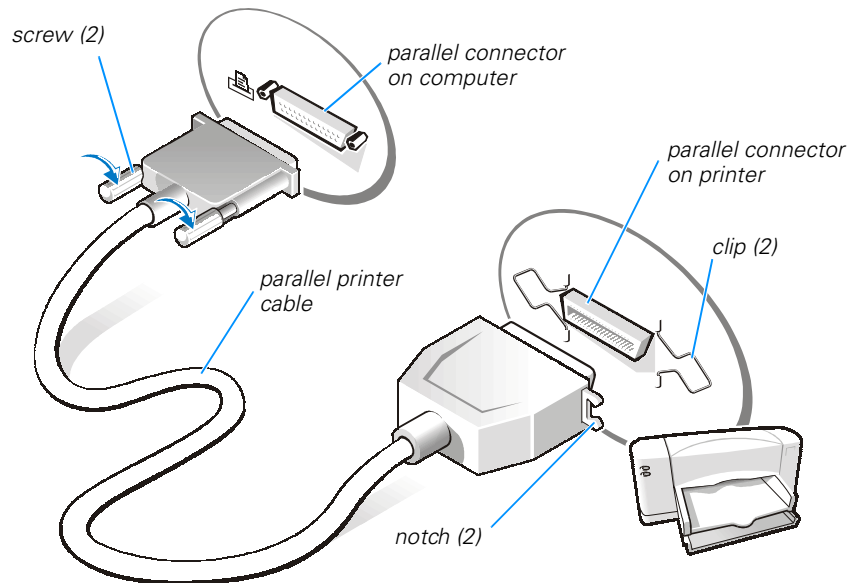
### Connecting a Parallel Printer

**NOTICE: Use only a standard IEEE parallel cable measuring 3 meters (10 feet) or less to connect the printer to the computer. Use of an IEEE-compatible parallel cable may prevent the printer from operating properly.**

To connect the printer to the computer, perform the following steps:

1. Turn off the computer and make sure that the printer is also turned off.
2. Attach the printer cable to the parallel connector on the computer and the printer.

Secure the printer cable connector to the computer connector by tightening the two screws (see Figure 3-1). Secure the printer cable connector to the printer connector by snapping the two clips into the two notches.



**Figure 3-1. Parallel Printer Connections**

3. Turn on the printer and then turn on the computer.



*NOTE: If the **Add New Hardware Wizard** screen appears, click **Cancel**.*

4. Go to "Installing Software for a Printer," found later in this chapter.

### **Connecting a USB Printer**



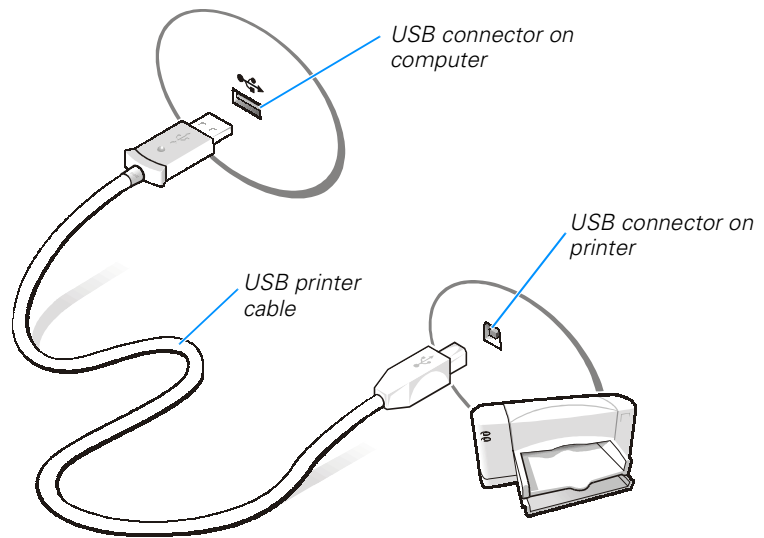
*NOTE: USB devices can be connected to the computer while it is on.*

To connect the printer to the computer, perform the following steps:

1. Attach the printer cable to the USB connector on the computer and the printer.

The USB connectors are keyed to fit only one way.

An example of a typical USB printer setup is shown in Figure 3-2.



**Figure 3-2. USB Printer Connections**



*NOTE: If the **Add New Hardware Wizard** screen appears, click **Cancel**.*

2. Go to the next section, "Installing Software for a Printer."

## **Installing Software for a Printer**



*NOTE: Dell installs the software for some new printers. To determine if your printer's software is already installed, click the **Start** button, point to **Settings**, and then click **Printers**. If your printer is listed in the **Printers** window, the printer is ready to use; no software installation is required.*

Most new printers provide installation CDs that run automatically when inserted in the CD-ROM or DVD-ROM drive. Install the software for these printers by inserting the CD and following the prompts on your screen using the instructions that came with the printer. It is not necessary to use the **Printer Wizard** to install these types of printers.

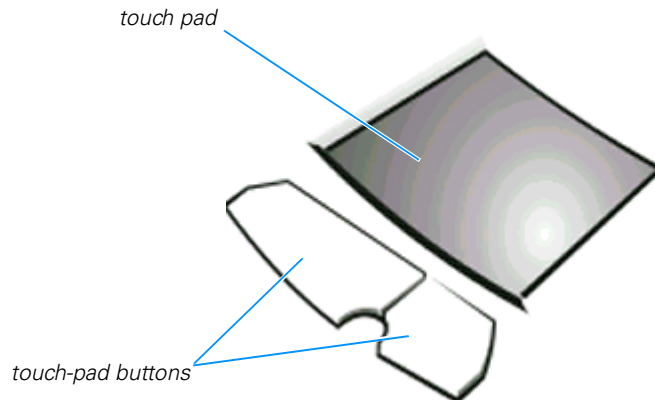
If your printer's installation CD does not automatically run, click the **Start** button, click **Run**, and type `x:\setup.exe`, where `x` is the letter of your CD-ROM or DVD-ROM drive (typically drive D). Then click **OK**, and follow the prompts on your screen.



*NOTE: If you are adding an older printer and the printer does not respond after you install the software, make sure that the system's parallel port is set to operate in bidirectional mode in the system setup program. See Appendix B, "System Setup Program," in your system's Reference and Troubleshooting Guide for instructions.*

## Touch Pad

The Personal System/2 (PS/2)-compatible touch pad (see Figure 3-3) detects the position of your finger over a touch-sensitive area and provides the computer with full mouse functionality. The touch pad's two buttons correspond to the left and right buttons on a standard mouse.



**Figure 3-3. Touch Pad and Buttons**

Use the touch pad to perform common mouse functions as follows:

- To move the cursor, lightly slide your finger over the smooth sensor area.
- To select an object, gently tap once on the surface of the touch pad.
- To select and move (or drag) an object, position the cursor on the object and tap down-up-down on the touch pad. On the second down motion, leave your finger on the touch pad and move the selected object by sliding your finger across the surface.
- To double-click an object, position the cursor on the object and then tap twice.

To customize touch pad and cursor features, perform the following steps:

1. Click the **Start** button, point to **Settings**, and then click **Control Panel**.

The **Control Panel** window appears.

2. Double-click the **Mouse** icon.
3. Make your desired selections in the **Mouse Properties** window. Click **Help** if you need more information.
4. To incorporate your changes, click **Apply**.





*NOTE: Keep your fingers away from the touch pad while the computer is booting or loading the operating system. If you touch the touch pad at either time, the cursor will not move until you remove your finger from the touch pad surface.*

## PC Cards

The PC Card slot has two PC Card connectors and supports four combinations of cards. See the following subsections for installation and removal instructions. For information on configuring a PC Card, see “PC Cards” in the system *Help*.

### Installing PC Cards

PC Cards are generally marked with a symbol (such as a triangle or an arrow) to indicate which end to insert into the slot. The cards are keyed to prevent incorrect insertion. If card orientation is not clear, see the documentation that comes with the card. You can install a PC Card while the computer is running. The PC Card is automatically detected.

To install a PC Card, perform the following steps:

1. Hold the card with its orientation symbol pointing into the slot, with the top side of the card facing up.
2. Insert the card into the slot, and press in firmly until the card is completely seated in the internal PC Card connector.

If you encounter too much resistance when inserting the card, do not force the card. Check the card's orientation, and try again.

The computer recognizes most input/output (I/O) cards and automatically loads the appropriate device driver.

If your older modem communications software cannot use certain interrupt request (IRQ) settings, you must disable the serial port or infrared port to use the software.

### Removing PC Cards

To remove a PC Card from the PC Card slot, perform the following steps.

**NOTICE: Use the PC Card configuration utility on the taskbar to select and stop a card from functioning before you remove it from the computer. If you do not remove the card in the configuration utility, you could lose data from open application programs.**

1. Press the eject button.
2. When the button slides out, press it again to release the card.
3. Gently remove the card.
4. Press the eject button once more until it is flush with the computer casing.

## CD-ROM and DVD-ROM Drives

CD-ROM and DVD-ROM drives read audio CDs and a variety of other CD formats. The DVD-ROM drive also plays DVDs.

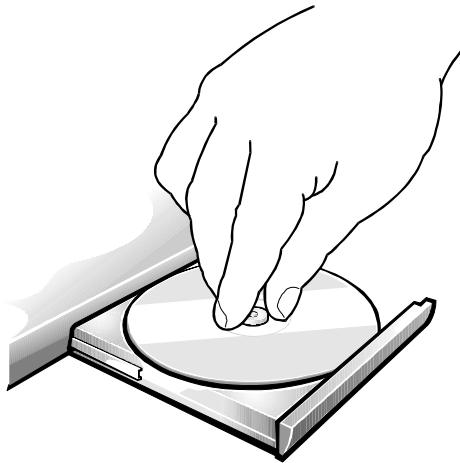
**NOTICE: Do not move the computer while the CD-ROM drive is in use. Doing so could interrupt the flow of data between the CD-ROM drive and the hard-disk drive or diskette drive.**

To use a disc in the drive, perform the following steps:

1. Press the button on the front of the drive to open the disc tray, and then pull the tray the rest of the way out.

**NOTICE: Do not press down on the disc tray when opening or closing it.**

2. Place the disc in the center of the disc tray with the label side facing up.
3. Center the disc on the spindle, as shown in Figure 3-4. Then gently press the CD or DVD down on both sides of the spindle until the disc snaps into place.



**Figure 3-4. Inserting a Disc Into the Drive**

**NOTICE: If the disc is not properly seated, the disc and CD-ROM or DVD-ROM drive will be damaged.**

4. Close the tray by lightly pressing the front edge of the tray. The tray clicks when it is fully closed.



*NOTE: High-speed CD-ROM or DVD-ROM drives spin the disc at a very high rotational speed and may be noisy. If a disc has printing on only half of the disc, or if the disc is slightly imbalanced, the imbalance is greatly magnified by the high speed and the noise is louder. This effect is inherent in the high-speed technology and does not indicate a problem with the drive.*

When the drive is in use, the drive-access indicator blinks on the front of the drive bezel.

When using a CD-ROM or DVD-ROM drive, follow these guidelines:

- Disable the autoplay feature while you are using the drive.
- Never use damaged, broken, or deformed discs.
- Do not press the open/close button while the computer is accessing a disc.
- Keep the disc tray closed when you are not using the drive.

